

**Original user manual**

# **Jasopels Q-VEX Clima**



## 1. Declaration of Conformity

### EU Declaration of Conformity

Manufacturer: Jasopels A / S                      Tel. +45 76 94 35 00  
Address: Fabriksvej 19,                              DK-7441 Bording

Machine: Jasopels Q-VEX Clima  
Type: 3410-82002000

Jasopels A/S declares that this product is in accordance with the following EU directives:

2006/42/EC

2006/95/EC

2004/108/EC

Furthermore, we declare that the following harmonized standards have been applied:

EN 60204-1

EN 60439-1

EN 61082-1

DS/EN 12100 : 2011

DS/EN 14121-2

Place and date: Bording, 1st. September 2013

Name: CEO Poul Bach

A handwritten signature in black ink, appearing to read "Poul Bach". The signature is fluid and cursive, with the first letters of the first and last names being capitalized and prominent.

## 2. Table of contents

<b>1. Declaration of Conformity.....</b>	<b>2</b>
<b>2. Table of contents .....</b>	<b>3</b>
<b>3. Preface.....</b>	<b>4</b>
<b>4. Symbol explanation.....</b>	<b>4</b>
<b>5. Introduction to the machine .....</b>	<b>5</b>
<b>6. Start-up .....</b>	<b>6</b>
<b>7. Operation.....</b>	<b>7</b>
<b>8. Technical data.....</b>	<b>9</b>
<b>9. Electrical diagram.....</b>	<b>10</b>
<b>10. User's note .....</b>	<b>17</b>

### 3. Preface

- This User Manual is an important part of your new machine. Read the manual carefully and use it as a reference book.
- This manual contains important information about safety and the proper use of the machine.
- The manual should be stored with the machine. It is important that the user manual is supplied with the machine upon resale and loan out.
- The owner of the machine must make sure that the operator, service personnel and others who have access to the machine are instructed on the proper use and handling of the machine. Read this user's manual for more information.

### 4. Symbol explanation

- Please read this manual and follow the instructions. In order to emphasize certain information, the following expressions are used:



- Note!!

A triangle containing an exclamation mark is a warning symbol that warns you of important instructions or information concerning this machine.

## 5. Introduction to the machine

- Q-VEX Clima has been designed to control the humidity and temperature in the drying room, especially with MAXI trolley.
- Q-VEX Clima ensures optimal humidity and temperature control which will guarantee proper drying of the skins.
- It has a built-in humidistat and thermostat, humidifier and a warming element.
- It is easy to install as all is in one unit. It only requires electrical, water and air connection, as well as ventilation pipes.

### Note!

- The owner of the machine must make sure that the operator, service personnel and others who have access to the machine are instructed on the proper use and handling of the machine.
- The machine may only be used for the purpose it is designed for.
- If any problems occur with the machine or its operation, the machine must be properly shut off before correcting the problem, unless the correction can be made using the machine's control buttons.
- The user manual must always be kept available for the operator.



## 6. Start-up

- Make sure electrical-, water-, and air supply is present.
- Turn on the main switch to position "1"
- Within a few seconds the overview picture is shown on the operator panel and the unit is operational.
- The machine is turned off by pressing the main switch.

**DANGER!**

**Voltage is present on the machine.**

**Assembly is only to be opened by authorized personnel.**

**Assembly must be closed whenever voltage is present.**



## 7. Operation

- After electricity, water and air has been connected as described in point 6, the machine is ready for use.
- The operation is carried out via touch panel.



Fig. 1 Overview picture.

- A keyboard will show up when you press menu. Fill in wished values and press ENT. to finish



Fig. 2 Status picture.

- External temperature key is only relevant when dehumidifier is connected. (Notice: Jumper terminal + - 8 must be removed to enable dehumidifier)



Fig. 3 Trend pictures.

- Trend screens show temperature-/humidity curves for the past hour of operation. If logging is paused, the curve can be scrolled 12 hours further back - 1 hour at a time.



## 8. Technical data

- Air connection: Quick-lock coupling
- Electrical connection: 3 x400V + N + PE
- Max fuse: 25A
- Rated current: 23A
- Control voltage: 24 VAC
- Fan: 230V/400W
- Heating element: 400V/9kW
- Air valve: 24 VAC
- Humidifier: 24VAC
- Noise:

Noise measurement have not been performed on this machine. You can lead a normal conversation in the direct proximity of the machine.





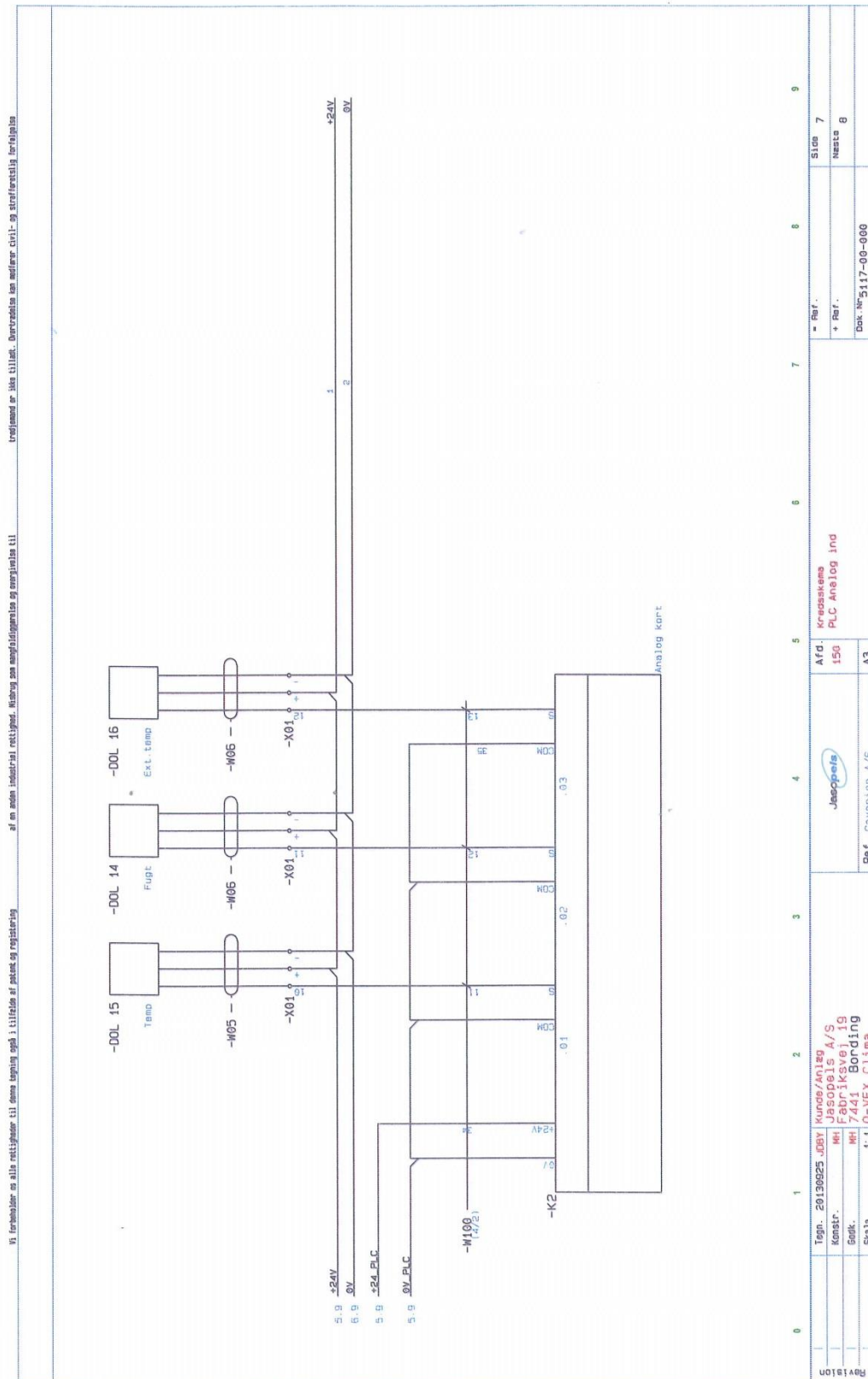














10. User's note.

