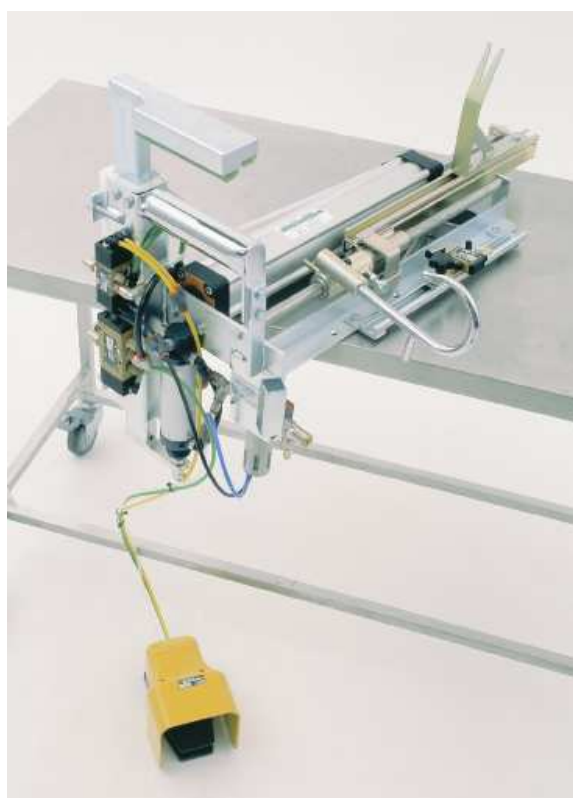


Body Hook

User manual

Body Hook





1. Declaration of Accordance

Declaration of accordance with European standards

Manufacturer: Jasopels Production A/S Phone + 45 76 94 35 00
Address: Fabriksvej 19 7441 Bording

Machine: Body Hook XL
Type: 15 - 6000

Jasopels Production A/S declares that this product is in accordance with the following EU directives:

89/336 EEC

98/37 EEC

Furthermore we declare that the following harmonised standards have been used:

EN 983

Place and date: Frederikshavn, July 1, 2005

Name: Managing Director Poul Bach

A handwritten signature in black ink, appearing to read "Poul Bach". The signature is fluid and cursive.



2. Table of Contents

1.	Declaration of Accordance	2
2.	Table of Contents	3
3.	Preface	4
4.	Explanation of Symbols	4
5.	Introduction to the Machine	5
6.	Start-Up	6
7.	Operation	7
8.	Maintenance	9
9.	Technical Data	10
10.	Air Diagram	11
11.	List of Spare Parts	12
12.	Trouble Shooting	13

3. Preface

- This User's Manual is an important part of your new machine. Read this manual thoroughly and use it as a book of reference.
- This manual contains important information about safety and use of the machine.
- The manual should be stored with the machine. It is important that the user's manual is enclosed in the resale or lending of the machine to third parties.
- The user of the machine is to ensure that operator, service personnel and others who have access to the machine have been instructed in the correct operation and handling of the machine.
- Refer to this User's Manual for further information.

4. Explanation of Symbols

- Please read this User's Manual and follow the instructions given. In order to stress certain parts of the information the following expressions are used:



- **Note!!**
A triangle containing an exclamation mark is a warning symbol that warns you of important instructions or information concerning this machine.



- **Warning!!**
Triange containing a warning about the risk of danger of crushing.

5. Introduction to the Machine

- Body hook T4 XL has been designed to loosen the tail and hind legs from the mink's fur in such a way as to take the load off the skinning staff as much as possible.
- The further development of Body Hook T3 has led to a change in the body holder, which has led to a better and softer grip around the minks with significantly less damage to bellies and tails.
- The XL model has been made 10 cm longer and with an extended stroke.
- The body hook is designed to be fastened to a table and can be mounted in exactly the direction the operator needs in order to achieve the best ergonomic working position.
- Shorter cylinder ring, bigger valve and air tubes, combined with simple operator control have contributed to an increase of the capacity with up to 300 minks per hour.
- The body hook detaches the hind part of the body, tail and both hind legs and makes it easier to skin the rest of the animal. It is necessary, however, that the tail and the hind part of the body have been cut open in advance.
- The body hook is simple and easy to operate but "User's Manual" has to be read before the machine is started up.

Note!!

- The user of the machine is to ensure that operator, service personnel and others who have access to the machine have been instructed in the correct operation and handling of the machine. Refer to this User's Manual for further information.
- The machine must only be used for the purpose for which it has been constructed.
- Under no circumstances may faults in the machine or its operation – no matter what they are – corrected before the machine has been properly switched off, unless a minor correction can be made through the machines operation buttons.

The user's manual must always be available for the operator.



6. Start-Up



- Before start-up the machine has to be mounted onto a table or the like. The body hook is screwed to the base through the 6 mounting holes, which are placed on the mounting frame. It is advisable to use through-going bolts for the mounting, and the base has to be very stable because of the intense movements of the cylinder, which occur under the operation.
- After the safe mounting of the body hook compressed air can be connected to the quick coupling through the soft starter figure 1.
- The plastic tray is placed in the holder by the air filter.
- The machine is now ready for use.

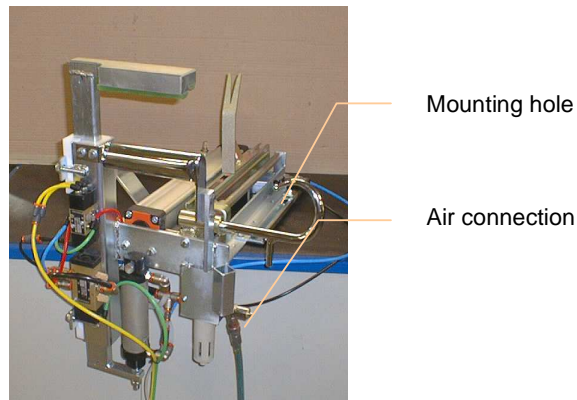


Figure 1. Mounting

DANGER!

Keep a safe distance from all the movable parts under the connection of pressed air because unintended cylinder movements may occur during this process.



7. Operation

After having been connected as described in part 6 the body hook is ready for use.

- When the mink has been cut open (from paw to paw and along the tail) it is placed in the plastic tray.
- Now the hook is inserted into the belly, up the left thigh, over the back, around the right thigh and out of the belly. Always make sure that there are at least 2 cm of the hook free at the right thigh.
- When the mink has been drawn onto the hook, the hook is tipped vertically so that the mink lies on its belly under the body holder.
- Adjust the animal so 2 cm of the tip of the hook are free (in order to avoid that the right leg slips off the hook under the skinning process).
- Grip the mink's front part with your left hand while at the same time holding the back part right over the hook with your right hand and press the foot lever.



Warning!!
There is RISK for danger of crushing under the body holder when the foot lever is activated.

- When the foot lever is activated the body holder goes down and fixates the mink while the hook presses on until it reaches the stop valve or the final stop. The hook returns when the foot lever is de-activated.
- Stop valve figure 2. has to be adjusted in such a way that the hook stops right after the hind legs have been released. The valve can be moved horizontally by loosening the wing screw.

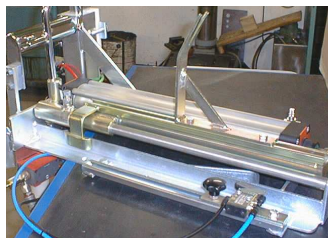


Figure 2. Adjustable end stop

- When the hook is back in its original position, the tail is released. The tailbone is placed over the tail iron so that the skin lies on the right side. Carefully press the tail down on the tail iron with your right hand, and with



your left hand grip again the mink's front part while the foot lever is activated.

- The body holder goes down again and fixates the animal while the tail iron separates the tailbone from the skin.
- When the foot lever is de-activated the hook returns to its original position and the process is ended.



8. Maintenance

DANGER!

Disconnect the compressed air before starting on any maintenance, cleaning or other service on the machine.

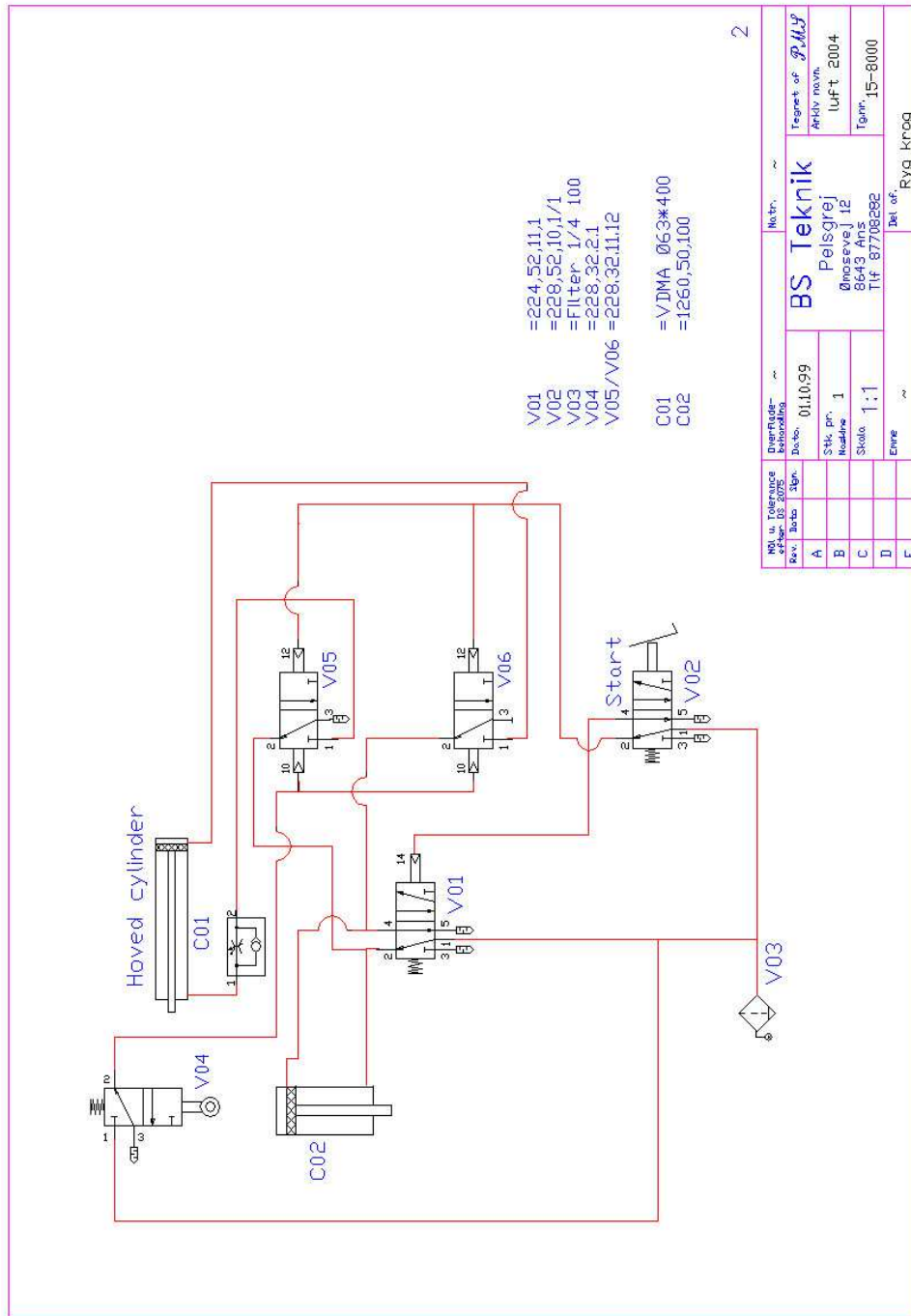
- The body hook ought to be cleaned daily with a blowgun, if necessary with hot water where there is a lot of blood. Especially the area around the glacier bearings on the sliding guide figure 3.11 to the hook proper should be cleaned. It is advisable to lubricate the bearings and the horizontal shaft with a little oil or rust solvent in order to dissolve dried blood that is deposited between the bearings.
- The foot lever is cleaned daily with a blowgun.
- Empty the water emitter of the filter for the compressed air for water daily by pressing the button under the glass until the glass is empty. The water emitter can empty itself if the pressure tube on the quick coupling is removed. If there are oil residues or other impurities in the filter the glass should be removed and cleaned with warm soap water.
- After the skinning is over the machine is cleaned as mentioned above. When the machine is dry the shafts and bearings are lubricated with a thin layer of oil.
- The connection to the compressed air is disconnected.



9. Technical Data

- Air connection
 - Air consumption
 - Measurements
- Quick coupling
Max. 8 bar, 3,1 l/cycle
Height 75 cm
Length 85 cm
Width 26 cm

10. Air diagram



11. List of Spare Parts

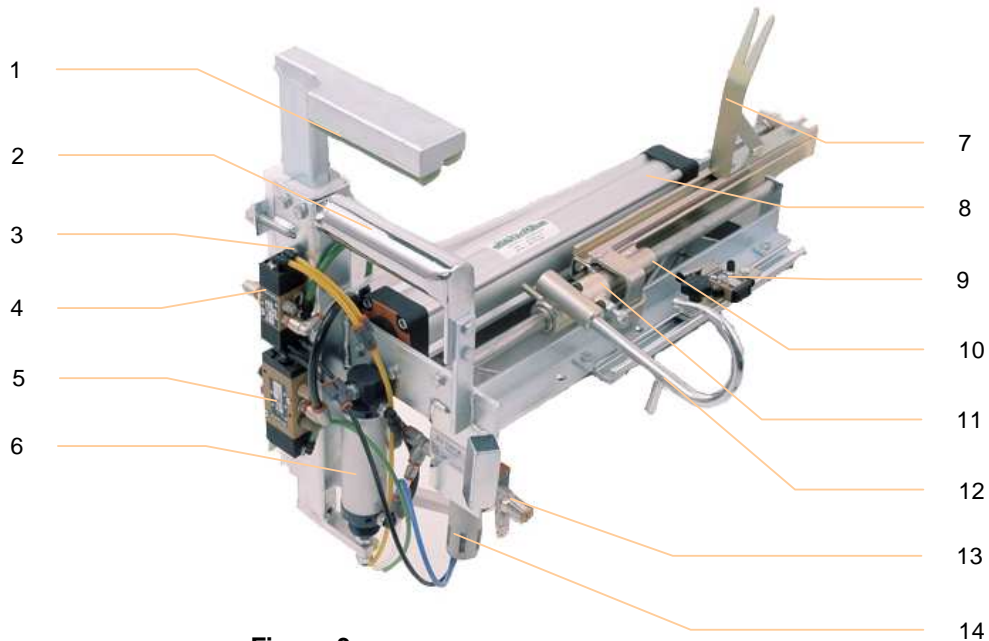


Figure 3.

Fig. No.	Code No.	Spare Part No.	Name
3.1	5130-00140023	48140023	Rubber body hook 10x24x235 (2 pcs.)
3.2	5130-00150130	48149910	Chromium-plated pipe
3.3	5911-5228321112	60002120	Valve
3.4	5911-5228321112	60002120	Valve
3.5	5911-5224521101	60002450	Valve
3.6	5912-31150100	61350100	Cylinder 1260.50.100A
3.7	5130-00150034	48150034	Tail iron
3.8	5912-32363400		Cylinder 1321.63.400 VDMA
3.9	5911-5228320201	60001020	Stop valve
3.10	5130-00153002	48153002	Sliding guide internal
3.11	5130-00153001	48153001	Sliding guide external
3.12	5130-00150121	48150120	Hook with ball Female
3.12	5130-00150120	48150121	Hook with ball Male
3.13	5911-4786113134	60101313	Soft starter
3.14	5914-32001510	62001510	Filter 1/4 100
3.15	5911-5228521011	60002310	Foot lever external



12. Trouble Shooting

DANGER!

Disconnect the compressed air before starting on any maintenance, cleaning or other service on the machine.

This part describes how some known problems can be solved by the user. This is not as description of how the machine can be repaired but more an orientation about how to fix some minor problems. It is advisable to contact Jasopels's Service Department in connection with problems that cannot be solved immediately or maybe agree on a service visit.

12.1 The body holder stays down.

If the body holder stays down and the hook does not return this may be due to the fact that the tread plate in the foot lever has been blocked by sawdust. Cleaning the foot lever with a blowgun can often solve the problem, but sometimes it is necessary to take down the yellow plate before cleaning.

12.2 The body holder reacts slowly.

If the body holder reacts slowly when the mink is to be fixated this can be due to the fact that the purging filter on the valve figure 3.5 is clogged. The filter is removed carefully (maybe loosened by an adjustable spanner), cleaned, and attached again.



12.3 The hook is hard to move.

Over time dried blood and sawdust can be accumulated in the inner part of the external sliding guide, which will make it very difficult to tilt the hook.

Push the hook halfway forward and screw off the socket screw with the lock nut that holds the internal and external sliding guides together. Separate the two guides from each other and clean them. Rust solvent efficiently removes blood and fat and has a good lubricity at the same time. When the two tubes are put together again make sure not to screw the socket screw completely into the base before tightening the lock nut, because this can make it difficult to move the hook.