

Original user manual

Jasopels Maxi Hook



1. Declaration of Conformity

EU Declaration of Conformity

Manufacturer: Jasopels A / S
Address: Fabriksvej 19,

Tel. +45 76 94 35 00
DK-7441 Bording

Machine: Jasopels Maxi Hook
Type : 3210 - 156001

Jasopels A / S declares that this product is in accordance with the following EU directives:

2006/42/EC

2006/95/EC

2006/108/EC

Furthermore, we declare that the following harmonized standards have been applied:

EN 60204-1

DS/EN 12100 : 2005

DS/EN 14121-1

DS/EN 14121-2

DS/EN 13850

Place and date: Bording 1st November 2011

Name: CEO Poul Bach

A handwritten signature in black ink, appearing to read "Poul Bach". The signature is fluid and cursive, with the first name "Poul" and last name "Bach" clearly distinguishable.

2. Table of contents

1. Declaration of Conformity.....	Fejl!
Bogmærke er ikke defineret.	
2. Table of contents	Fejl!
Bogmærke er ikke defineret.	
3. Preface	Fejl!
Bogmærke er ikke defineret.	
4. Symbol explanation.....	4
5. Introduction to the machine	5
6. Start-up	6
7. Operation.....	Fejl!
Bogmærke er ikke defineret.	
8. Maintenance	9
9. Technical data.....	10
10. Air diagram.....	11
11. User's note	18

3. Preface

- This User Manual is an important part of your new machine. Read the manual carefully and use it as a reference book.
- This manual contains important information about safety and the proper use of the machine.
- The manual should be stored with the machine. It is important that the user manual is supplied with the machine upon resale and loan out.
- The owner of the machine must make sure that the operator, service personnel and others who have access to the machine are instructed on the proper use and handling of the machine. Read this user's manual for more information.

4. Symbol explanation

- Please read this manual and follow the instructions. In order to emphasize certain information, the following expressions are used:



- Note!

A triangle containing an exclamation mark is a warning symbol that warns you of important instructions or information concerning this machine.



- Warning!

A triangle containing a warning about an entanglement and crush hazard.

5. Introduction to the machine

- Maxi Hook has been designed to loosen tail and hind legs from the skin in order to take the strain off the skinning personnel as much as possible.
- With Maxi Hook the skin is loosened with the regular pull. The machine is updated so that it is now adjusted also to large animals that are found on the farms.
- Maxi Hook should be attached to a table and can be installed in a position that the operator considers to be the most ergonomic.
- Maxi Hook loosens abdomen, tail and both hind legs and thus makes it easier to skin the rest of the animal. Yet it is the tail and the abdomen that are cut open in the first place.
- The machine is simple and easy to operate, yet the “Original user manual” must be read thoroughly before the machine is placed in service.

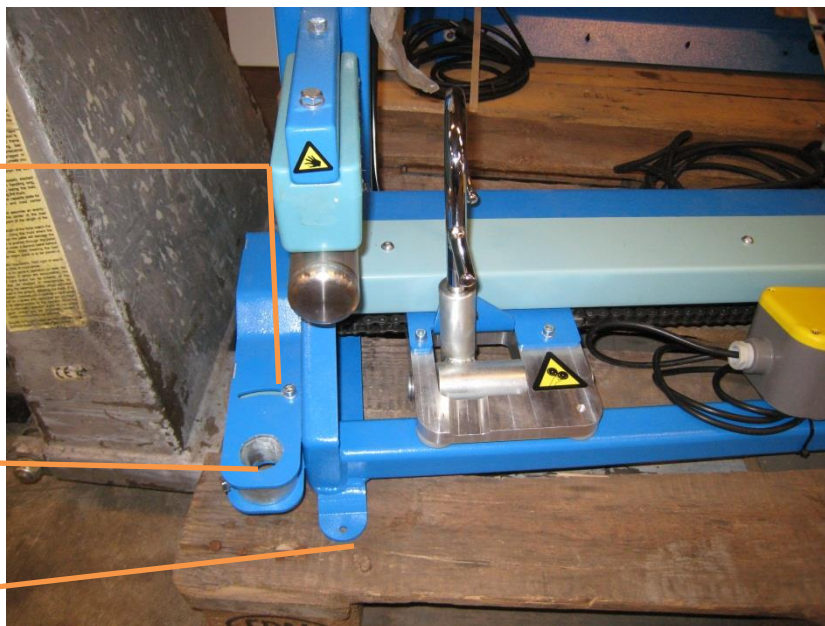
Note!

- The owner of the machine must make sure that the operator, service personnel and others who have access to the machine are instructed on the proper use and handling of the machine.
- The machine may only be used for the purpose it is designed for. The CE Declaration lapses upon any other use of the machine.
- If any problems occur with the machine or its operation, the machine must be properly shut off before correcting the problem, unless the correction can be made using the machine’s control buttons.
- The user manual must always be kept available for the operator.



6. Start-up

- Before the machine is used for the first time, it should be permanently fixed to a table or similar surface. Maxi Hook must be screwed into the surface through the 4 mounting holes that are placed in the machine frame. It is advisable to use expansion bolts. Make sure that the surface of the table is stable. Jasopels Fleshing table is highly recommended.
- Once Maxi Hook has been securely fastened, compressed air and electricity can be connected. **"Important"** After resetting the machine there is a risk of unintentional movements of the body holder.
- Plastic tray is placed in the holder.
- The machine is now ready to use.



Adjusting a plastic tray

Fittings for a plastic tray

Flange for installation of the machine

Fig. 1 Installation

DANGER!

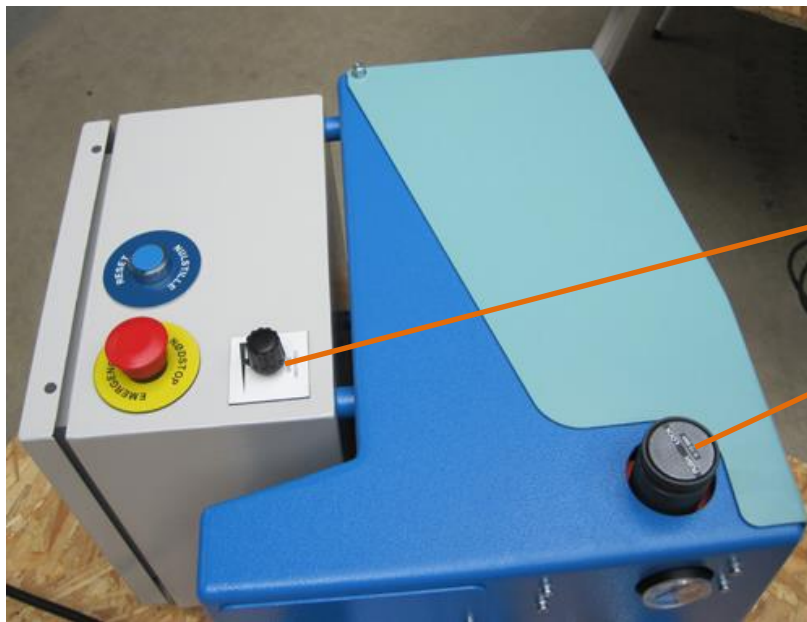
When resetting the machine keep a safe distance from all moving parts as they return to the starting position.



- The machine is turned off by pressing the emergency stop button.

7. Operation

After completing the steps described in section 6, Maxi Hook is ready to use.



Maxi Hook's speed

Adjusting a body holder

Fig. 2 Speed and pressure regulators

- The body holder's holding force can be adjusted with the regulator and the pressure value is found on the manometer.
- The Hook's forward and backward speed is adjusted with the knob which is placed on the top of the machine.

Warning!!!

There is a crush hazard under the body holder as well as at the end of the „hook's holder” once the foot pedal is activated.



- When the mink is cut open (from paw to paw and tail section) it should be placed in the plastic tray.
- Afterwards the hook moves to the abdomen side, up to the left thigh, over the back side, around the right thigh

and back to the abdomen. You should always make sure that there is a free space of at least 2 cm on the hook at the right thigh.

- When the mink is pulled onto the hook, it is moved to a vertical position so that the mink is lying on the abdomen under the body holder.
- Put the animal in the correct position, so that there is 2 cm space on the hook's tip (in order to avoid the situation where a right leg falls from the hook in the loosening process).
- Hold the front part of the mink's body with the left hand and the back part of the body with the right hand, just above the hook, and press the foot pedal.
- Once the foot pedal is activated the body holder goes down and holds the animal firmly. At the same time the hook moves forward until it reaches the limit switch. The hook goes back when the foot pedal is released.

8. Maintenance

DANGER!

Always disconnect the power supply before maintenance, cleaning and other services are performed on the machine



- Jasopels Maxi Hook should be cleaned on a daily basis with the pneumatic air blow gun and, if necessary, also with warm water where there is a lot of blood.
- The foot pedal should be cleaned on a daily basis with the pneumatic air blow gun.

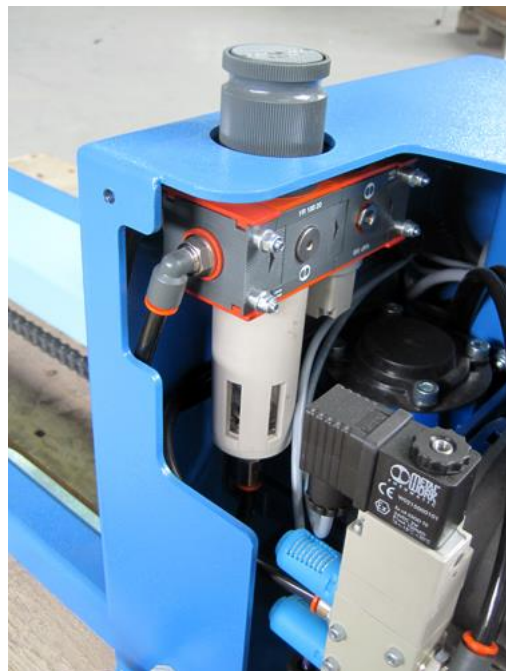
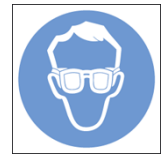


Fig.2 Water separators

- Compressed air filters in water separators should be emptied once a month. In order to do that, just keep the button placed under the glass pressed until the glass is empty. Water separators can also be emptied automatically if you remove the compressed air hose on the quick-lock coupling. If oil residues and other impurities are found in the filter, the glass must be taken out and cleaned in warm water with addition of soap.

- Once the pelting is finished, the machine must be cleaned as described above. When the machine is dry, its axles and bearings should be oiled generously.
- TIP: Rust loosener is an excellent product which dissolves blood deposits on the bearings.

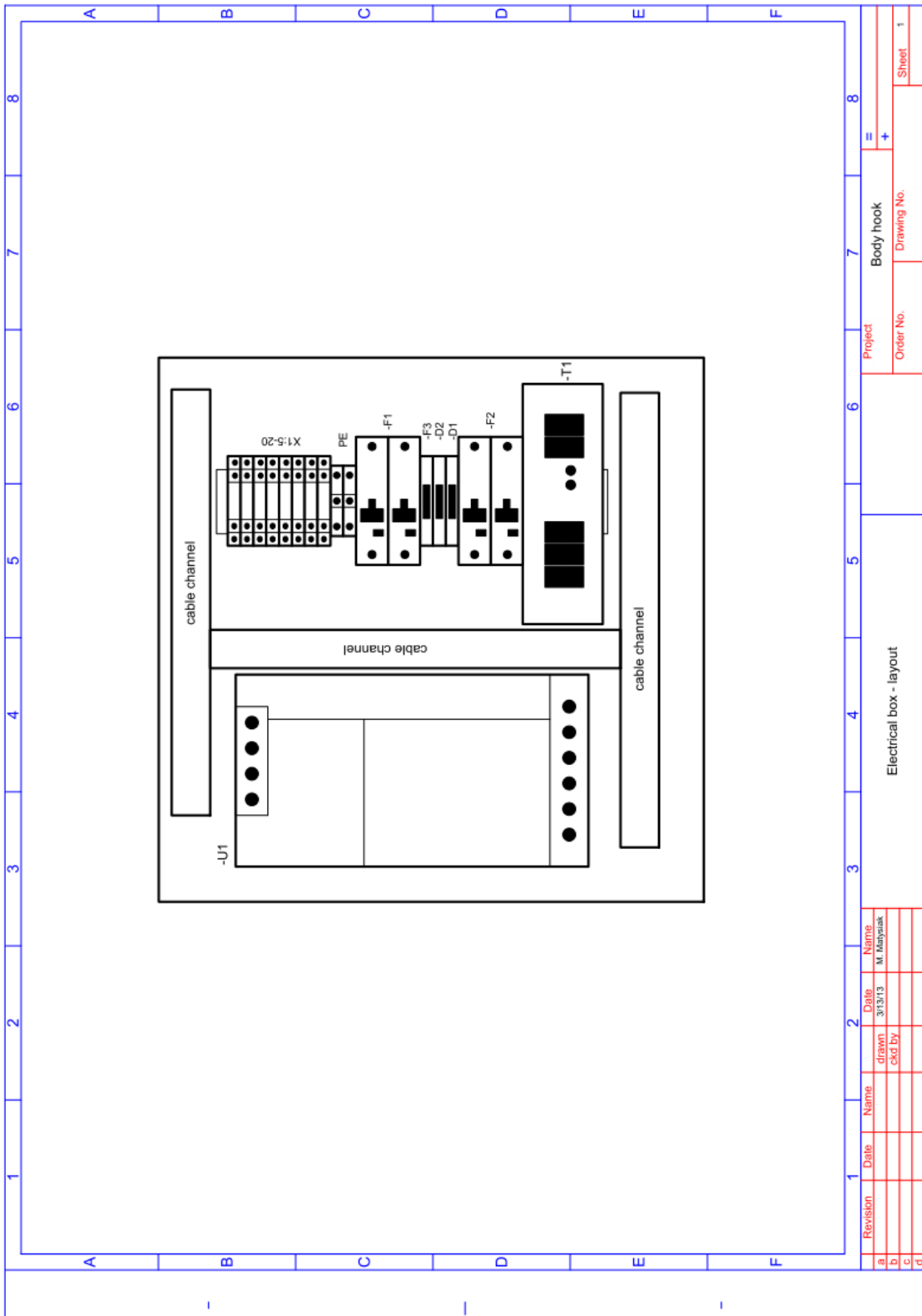
9. Technical data

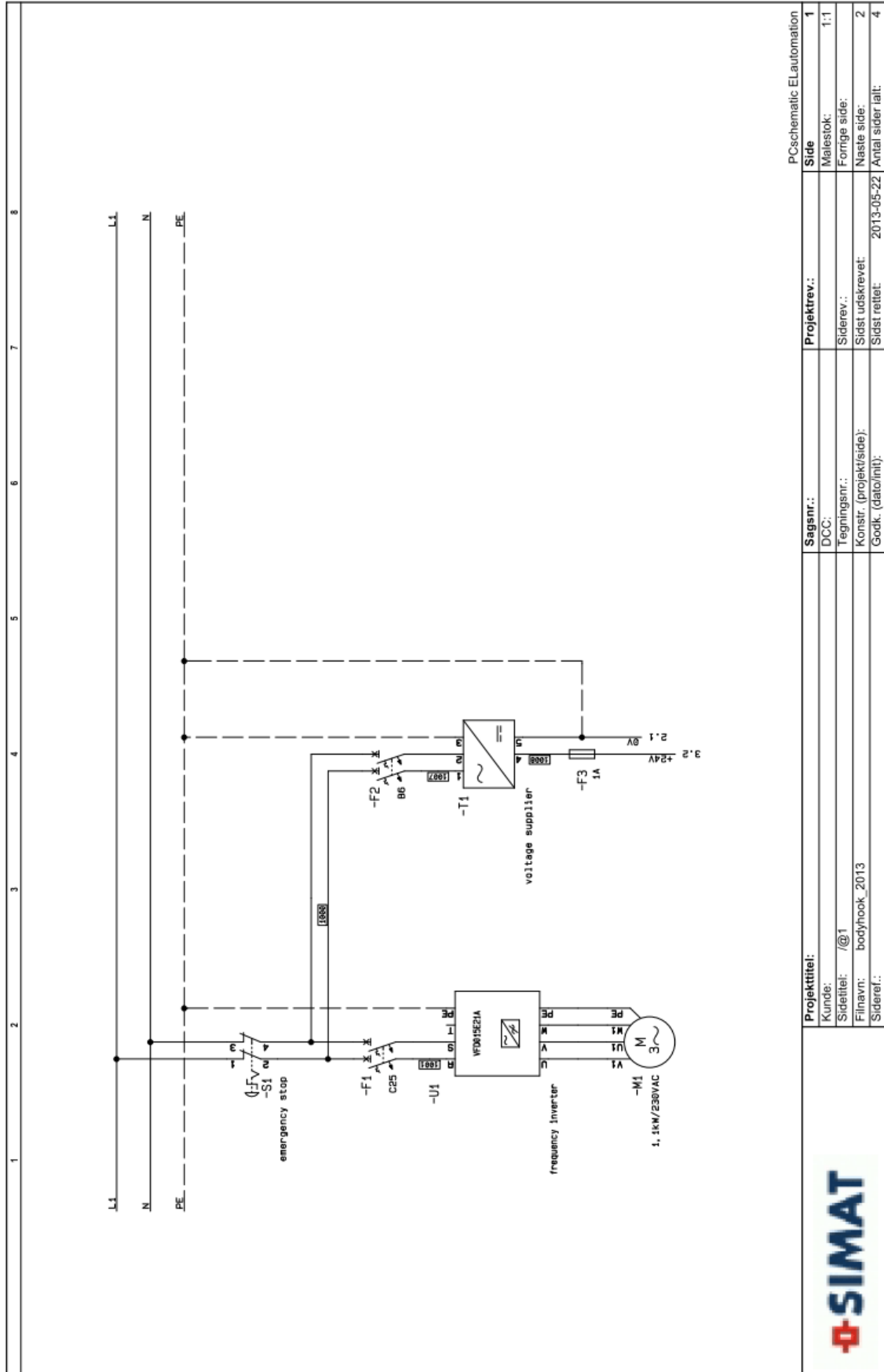
- Air Quick-lock coupling
- Electrical connection 220 v
- Dimensions
 - Height 67 cm
 - Length 132 cm
 - Width 59 cm

- Noise:

The noise tests has not been carried out for this machine. Maxi Hook's blowers are fitted with dampers. It is possible to lead a normal conversation in the direct proximity of the machine.

10. Air diagram

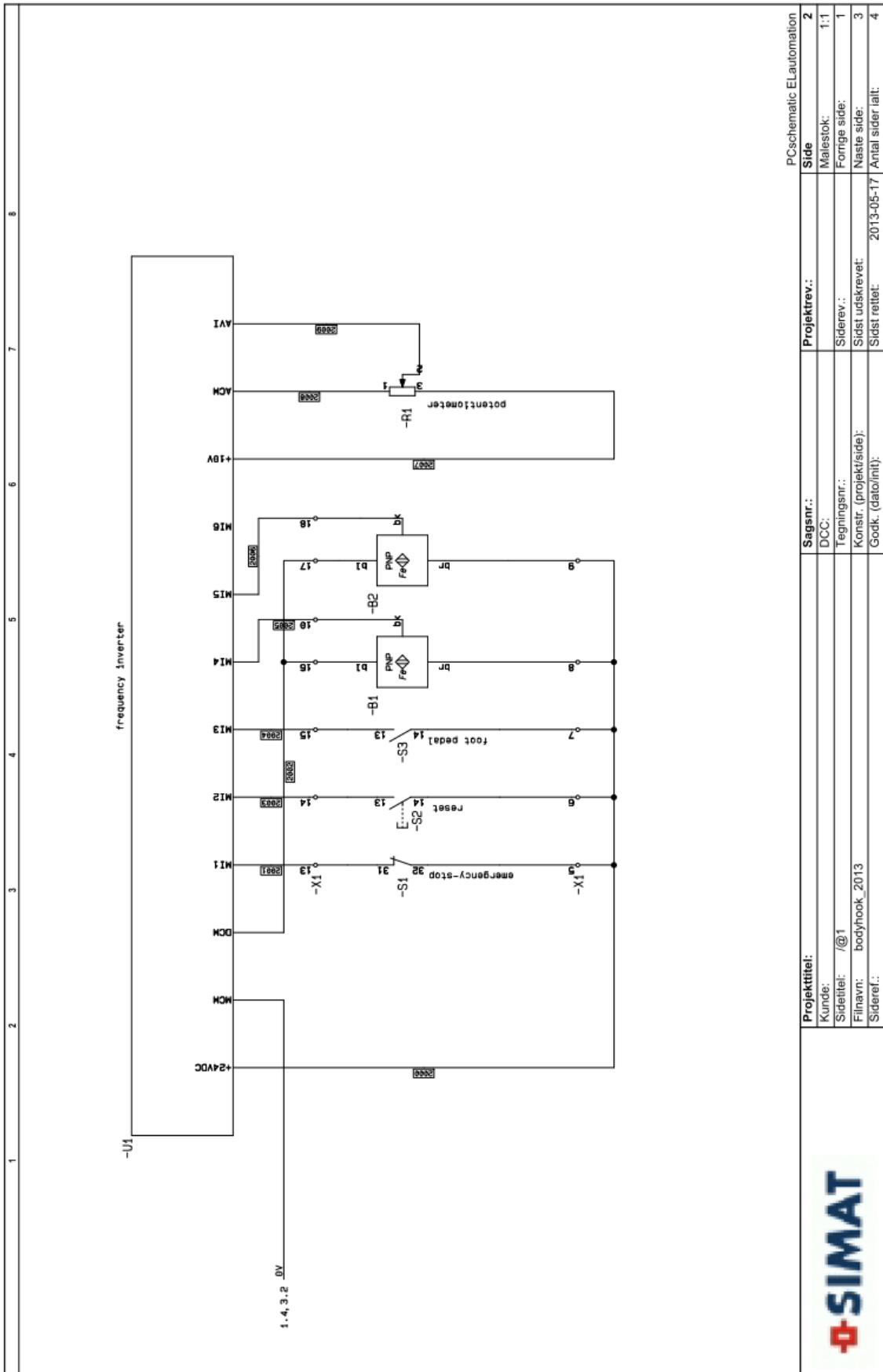


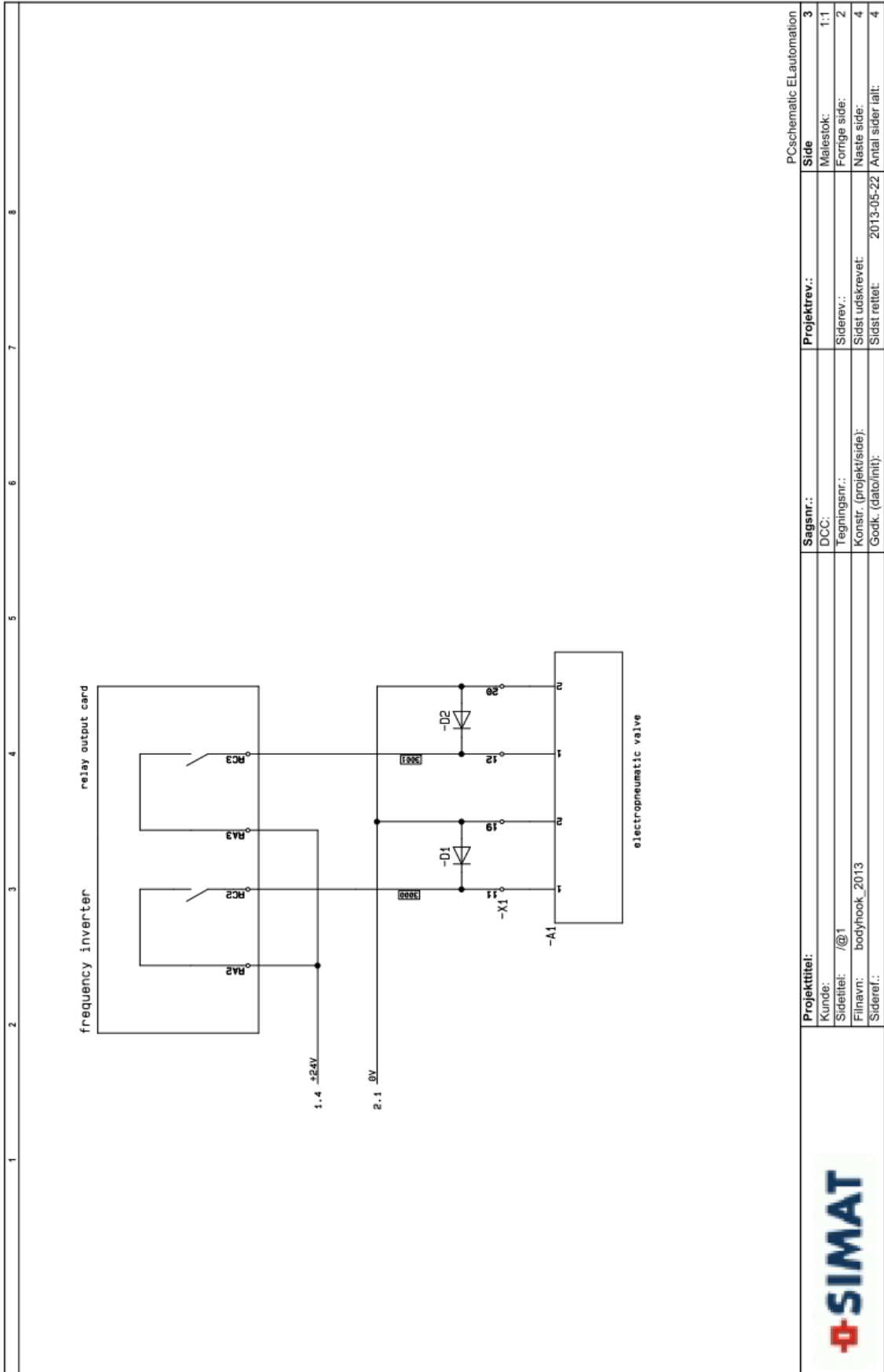


P: Schematic EL automation	
Sagsnr.:	1
DCC:	Målestok:
Tegningsnr.:	1:1
Konstr. (projekt/side):	Forrige side:
Godk. (dato/init):	Næste side:
	2013-05-22
	Antal sider ialt:
	4

Projekttitel:	
Kunde:	/@1
Sidettitel:	bodyhook_2013
Filnavn:	
Siderel.:	







		Projekttitel:	PCschematic ELautomation	
Kunde:	/@1	Sagsnr.:		
Sidetitel:	bodyhook_2013	DCC:		
Finavn:	bodyhook_2013	Tegningsnr.:		
Sideraf.:		Konstr. (projekt/side):		
		Godk. (dato/init):		
		Sidst rettet:	2013-05-22	Antal sider/ialt:
		Sidst udkrevet:	4	Naste side:
		Sidst rettet:	4	Antal sider/ialt:
		Projektrev.:	3	Side
		Malesbok:	1:1	

11. User's note

