

# JASOPELS MULTIUNIT

ITEM NO. 12600037



Our Quality – Your choice Jaso 



## TABLE OF CONTENTS

---

EU DECLARATION OF CONFORMITY .....	5
1. CONDITIONS .....	6
2. WARRANTY.....	6
3. APPLICATION AND FUNCTION.....	6
4.OPTIONAL ELEMENTS .....	6
5. OPERATION .....	7
6. MAINTENANCE .....	8
7. TECHNICAL DATA .....	10
8 SPARE PARTS.....	10
9. WARNINGS AND INCORRECT USE .....	11
NOTES .....	12



# EU DECLARATION OF CONFORMITY

---

## MACHINERY DIRECTIVE ANNEX II

Type: MultiUnit DC 24-1  
Description: Transport vehicle for production  
Date: 15-09-2011

Manufacturer:  
Name: MultiUnit ApS  
Address: Hestkærvej 36, Krogager  
Zip code, town: 7200 Grindsted  
Tel: +45 60 62 49 63

### IS IN COMPLIANCE WITH:

- The provisions of the Council Directive of 22 June 1988 on the approximation of Member States' legislation on machines, with special reference to Annex II A and Annex I on essential safety and health requirements for the design and manufacture of machines.
- The provisions of Council Directive of 19 February 1973 on the approximation of Member States legislation relating to electrical equipment designed for use within certain voltage limits (73/23 /EEC as amended).
- The provisions of Council Directive of 3 May 1989 on the approximation of Member States' legislation on electromagnetic compatibility (89/336 / EEC as amended).

### COMPLIANCE IS ACHIEVED WHEN THE PRODUCT MEETS

the following harmonized standards:

Environment:	Radiation:	Immunity:
Residential, commercial and light industry	<input type="checkbox"/> EN 50081 - 1	<input checked="" type="checkbox"/> EN 50082 - 1
Industry	<input checked="" type="checkbox"/> EN 50081 - 2	<input type="checkbox"/> EN 50082 - 2

### MANUFACTURED IN ACCORDANCE WITH THE FOLLOWING NATIONAL / INTERNATIONAL STANDARDS AND TECHNICAL SPECIFICATIONS:

- DS/EN 292-1 and DS/EN292-2  
Safety of machinery. Basic concepts, general principles for design, construction and final shape.
- DS/EN 294  
Safety of machinery. Danger zones and safety distances.  
First edition. Protection of hands and arms. 1993-11-10
- EN 60 204-1  
Electrical equipment of machines. First edition. Section 204-1.1993.

### STATEMENT ISSUED BY:

Name: Steen Kristensen Company  
Name: Multi Unit ApS  
Address: Hestkærvej 36, Krogager  
Zip code, town: 7200 Grindsted

Signature:



Date: 15-09-2011

Updated on 09-08-2016

## 1. CONDITIONS

---

MultiUnit ApS assumes no responsibility for this material, nor for its use for purposes not approved by the manufacturer.

MultiUnit ApS cannot be held liable for errors contained in this manual or for any direct or indirect loss as a result of delivery, presentation or use of this material.

The content may not be copied, reproduced or translated, either in whole or in part, without prior permission from MultiUnit ApS.

MultiUnit ApS shall bear no responsibility regarding compensation to anyone who has inadvertently disregarded safety rules included in this manual.

## 2. WARRANTY

---

MultiUnit ApS shall bear no liability regarding wear and breakage of components of the appliance, which are caused by the lack of maintenance or improper use. Guarantee does not apply to natural wear of the parts.

If the content of this manual is unintelligible to the user, they should contact the manufacturer to remedy the problem. Improper operation of the appliance may lead to crushing and serious bodily harm.

First edition - February 2004.

## 3. APPLICATION AND FUNCTION

---

MultiUnit DC 24-1 is a pedestrian-controlled self-propelled device used to transport goods whose weight does not exceed 300 kg.

The appliance has a significant added value and is well suited to handle and carry all kinds of items. MultiUnit is an appliance which can meet a growing need to improve the working environment and reduce lifting injuries. The appliance is particularly suitable for transporting all kinds of cargo, except for such loads whose centre of gravity would make its transport unstable.

The machine is made of components that meet EMC requirements (electronic noise) that make the equipment suitable for use in both industrial and private environment, where especially the latter is subject to stricter requirements.

MultiUnit DC 24-1 is not designed to transport persons or to be used as scaffolding, as this is subject to special restrictions and security conditions. Inappropriate use of the appliance may put the manufacturer at a legal disadvantage if damages actions require placing a watchman in the area where the appliance is operating.

2 pcs. 12 volt batteries provide the power required for the built-in gear motor that transfers power to one wheel of the appliance.

The machine is fitted with two large rubber and two smaller wheels, one of which must always rest on the ground. This makes the appliance always tilted a few degrees in relation to the load on the platform.

**When transporting special cargo:** MultiUnit ApS must be contacted to make sure that the cargo will not damage the device.

**MAX 300 KG**

## 4. OPTIONAL ELEMENTS

---

The appliance can be fitted with different elements. MultiUnit ApS is available to give advice on alternative design of these elements.

## 5. OPERATION

One may only transport goods on stable and firm surfaces.

### 5.1

- The appliance is connected to power by means of the above socket.
- Turn off the main switch during charging.
- Always charge your electric trolley when not in use.
- Turn off the battery charger when not in use.

MultiUnit DC 24-1 may be only be operated by people with a thorough knowledge of the appliance's functions, whit special regard to the safety regulations.

Use safety footwear and if necessary also gloves.

### 5.2

The trolley is equipped with two control boxes and a toggle switch which determines the direction in which your vehicle will run. Releasing the switch stops the cart.

In the gear panel there are 3 gears. They can be switched freely while driving.

Adjust the speed of the trolley according to your walking speed and the conditions.  
**DO NOT BUMP INTO PERSONS OR OBJECTS.**

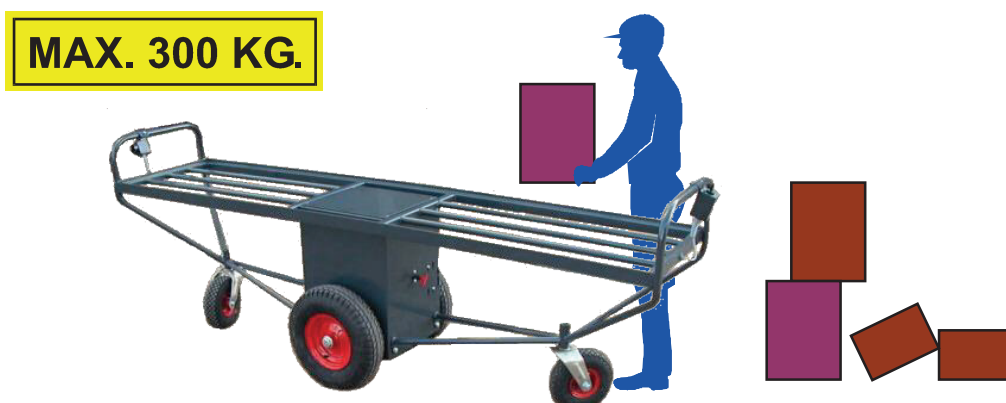


### 5.3

When you want to unload cargo on the truck, make sure that the machine is on a level surface, so that it does not roll away.

Caution! Be aware that the appliance tilts to the side where one unloads goods. The appliance is intended to rest only on one of the two support wheels.

Never leave the appliance in operation. **TURN OFF THE MAIN SWITCH.**



The trolley can carry 300 kg. If in doubt, you should seek information about the total weight of your load.

Goods with a high centre of gravity may make transport unstable - such transport should not be performed.

Transport of living animals should follow humanitarian principles. The appliance may be protected from sun, cold and drafts with covering/foreclosure. Transport of animals between farmers may require that the appliance / cages must be disinfected in accordance with veterinary requirements.

IF THE EQUIPMENT HAS DEFECTS, it must not be used until the faults are rectified. Make sure that there are no obstacles on the way of the appliance which could make it tip over.

#### 5.4

During charging, the controller automatically shuts off the switches

starting the trolley. The main switch (red key) must be turned off during charging.

The appliance is charged by impulses and the process takes about 9 hours.

The appliance should be charged outside normal working hours, for example at night, so that it can be used optimally during the day's work.

It is important to charge the appliance when not in use as this gives batteries longer lifespan.

- Turn off the main switch during charging.
- The appliance is connected to power by means of the above socket.
- Always charge your electric trolley when not in use.
- Turn off the battery charger when not in use.
- The appliance should be stored indoor and in a dry place.

Green light on = charger on,

Yellow light flashes quickly = Charging

Yellow light flashes slowly = charging with high voltage

Yellow light on = maintenance charge / ready to use.

Yellow light off = charging completed

If necessary, see also the instruction manual for charger.



## 6. MAINTENANCE - MAY ONLY BE PERFORMED WITH POWER PLUG OUT

Any interference into the appliance's controls may only be performed by MultiUnit.

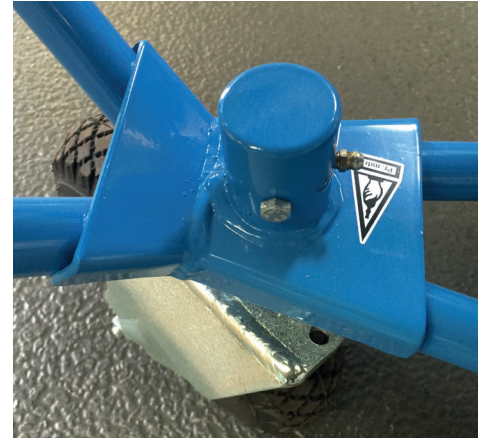
Using a clean appliance will increase work safety and satisfaction. Wash the appliance regularly with car shampoo and avoid rinsing under the "engine box". High pressure cleaning is not recommended - the controller electronics are not sufficiently encased.



### 6.1

Both wheel sockets should be greased every six months or as often as needed.

The hitches of the rear wheels are maintenance-free and should not be greased. They may be found in the engine box.



Check tire pressure regularly. Both rear wheels should be inflated to 35 psi. The support wheels must have tire pressure of 40 psi.

### 6.2

The batteries are connected in a parallel fashion so that the voltage is at a total of 24 volts these are factory-fitted batteries which are maintenance-free.

The use of open fire is strictly prohibited.

Disconnect the negative battery pole before carrying out the separation of the power cables.

Used batteries must be replaced with new equivalent ones. The battery box can be removed by loosening four nuts in the chassis, the red electrical plug should be disconnected, and then the battery box may be lifted with a tackle.



- Weight: 40 kg.
- Black electrical plug - 24 volt, 240 volt plugs may be used in house sockets.
- Grey electrical plug is for DC engine.
- Red electrical plug is for the batteries.

### 6.3

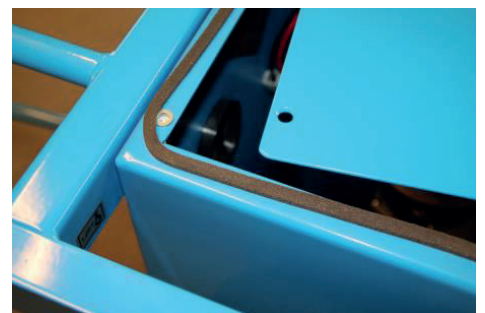
Repeated fuse failures are a sign of faulty operation of the power system and require contact with MultiUnit before the equipment may be used again.

### 6.4

The covering screen of the "engine box" must be installed before driving.

Accidents caused by the lack of the safety screen could result in placing the owner to the appliance at a legal disadvantage as regards the responsibility for the accident.

Make sure that the cover plate is installed tightly, so that no water can leak to the electronics.



If there is damage to the paint of the appliance, first sand the area and apply ordinary one-component undercoat and one coat of paint.

When, after many years of service your MultiUnit is unfit to be used any further, it must be disposed of in accordance municipal waste disposal regulations.

## 7. TECHNICAL DATA

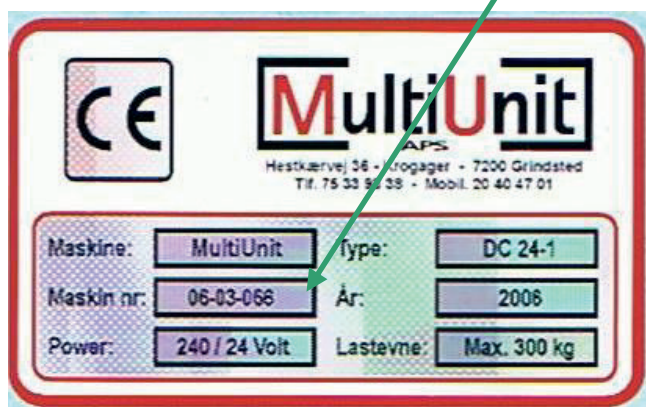
---

- Width: Bed 57.5 cm. Wheel 67 cm.
- Length: Bed 255 cm
- Height (total): 97 cm
- Loading height: 73 cm
- Unladen weight: 125 kg
- Max. load capacity: 300 kg
- Tire pressure:  
Drive wheel 35 psi.  
Supporting wheel - 40 psi.
- Power supply (battery): 24 V / 75Ah (2 x 12V / 75Ah)
- Power supply (charging): 24 Volt 8 Amp
- Grid connection: 230VAC / 50Hz (120VA)
- Environmental protection:  
Motor: IP54  
Control Boxes: IP54  
Steering module: IP00 (for installation)
- Charging time: 8 hours
- Noise level: Under 70 Db

## 8 SPARE PARTS


---

When ordering spare parts, please provide the serial number from the nameplate of the machine.  
Always use original spare parts.




## 9. WARNINGS AND INCORRECT USE

Damaged and illegible signs on the machine must be immediately replaced for the sake of safety.



© Pöschel 75 41383

- TRANSPORT OF PERSONS IS STRICTLY FORBIDDEN.
- Multiunit DC24 may be only handled by persons instructed how to use it and informed of all the related safety requirements.
- It is prohibited to use the appliance as scaffolding
- When driving make sure that there are no people trapped between the appliance and e.g. a wall
- Multiunit DC24 may not be used in the environment where there is a risk of explosion
- When charging, only earthed extension cords may be used (Phase 0)
- Loading and unloading may only take place on a stable and even surface
- Driving on uneven and steep surfaces over 7 degrees is prohibited
- Make sure that the operating area is clear of people or objects, pay special attention if there are any children in the area
- The appliance may be used only in good lighting conditions
- The cargo should be secured well against falling - if in doubt, it should be attached to the frame of the trolley
- The weight of the cargo should be known, if in doubt, check the weight before loading
- Transporting huge loads with a high centre of gravity is not advised
- Always switch off the main switch when you leave the appliance. When any assembling or service activities are performed, the main switch must also be turned off and the 230 V charger power connector removed.
- High pressure cleaning is not allowed. Use car shampoo and a brush to clean the appliance and clean only when the 230 V power connector is removed.
- When the appliance is used to transport animals, adhere to the veterinary advice regarding the disinfection.
- Always store the appliance indoors in a dry place which can be locked.
- If the appliance is defective, it must not be used.
- Keep the batteries charged - this will prolong their lifetime
- Using means of personal protection is the owner's responsibility.
- Always use:
  - Good quality protection gloves
  - Safety footwear with protection against slipping



S48040216-1 DK







## Our Quality – Your choice

Fabriksvej 19 • DK-7441 Bording • Tel. +45 98 42 05 66 • [info@jasopels.com](mailto:info@jasopels.com) • [www.jasopels.com](http://www.jasopels.com)

Varenr. 12600103



12600103